

# 8 MM OPEN ENDED

## POWERHOUSE™ HTD® BELTS

Standard Widths:

10 mm, 15 mm, 20 mm,

30 mm, 50 mm, 85 mm



Part Number	Width	Net Weight (lb/ft)	Maximum Continuous Length	Construction	Reinforcements
LL8M20	20 mm	.08	170 feet	Neoprene	Fiberglass
LL8M30	30 mm	.13	300 feet	Neoprene	Fiberglass
LL8M50	50 mm	.21	300 feet	Neoprene	Fiberglass
LL8M85	85 mm	.36	300 feet	Neoprene	Fiberglass
LL8M10US	10 mm	.05	328 feet	Polyurethane	Steel
LL8M15US	15 mm	.07	328 feet	Polyurethane	Steel
LL8M20US	20 mm	.09	328 feet	Polyurethane	Steel
LL8M25US	25 mm	.12	328 feet	Polyurethane	Steel
LL8M30US	30 mm	.14	328 feet	Polyurethane	Steel
LL8M50US	50 mm	.23	328 feet	Polyurethane	Steel

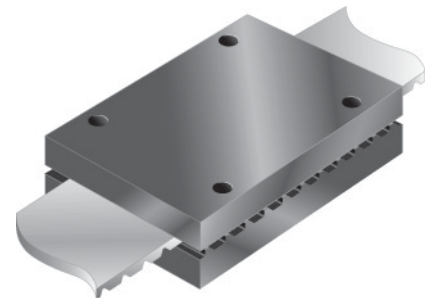
Open ended belting is a money-saving, low upkeep alternative to roller chain and is most effective in long length conveying and positioning applications requiring protection from grime, grease, oil, and moisture.

## 8 MM POWERHOUSE™ HTD® CLAMPING PLATE

Standard Widths:

20 mm, 30 mm, 50 mm, 85 mm

Aluminum



Part Number	For Belt Width (mm)
CP-8M-20	20 mm
CP-8M-30	30 mm
CP-8M-50	50 mm
CP-8M-85	85 mm